

TOWN OF FRANKLIN COMMUNITY CHOICE POWER SUPPLY PROGRAM

STATUS REPORT THRU DECEMBER 2020

Prepared March 2021

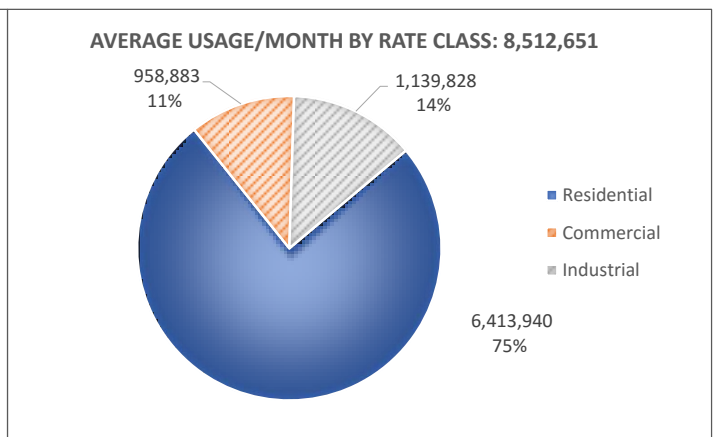
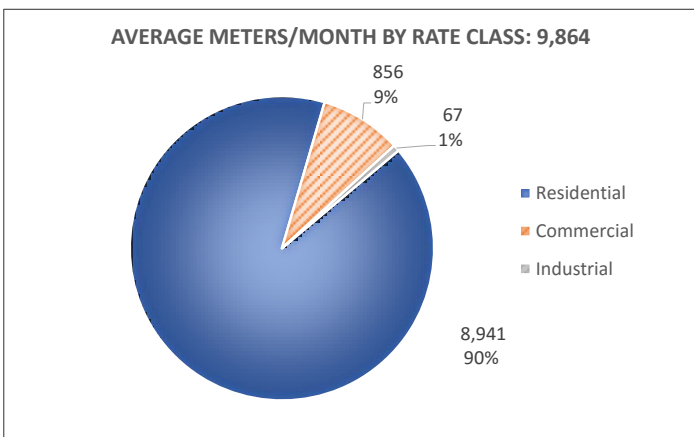
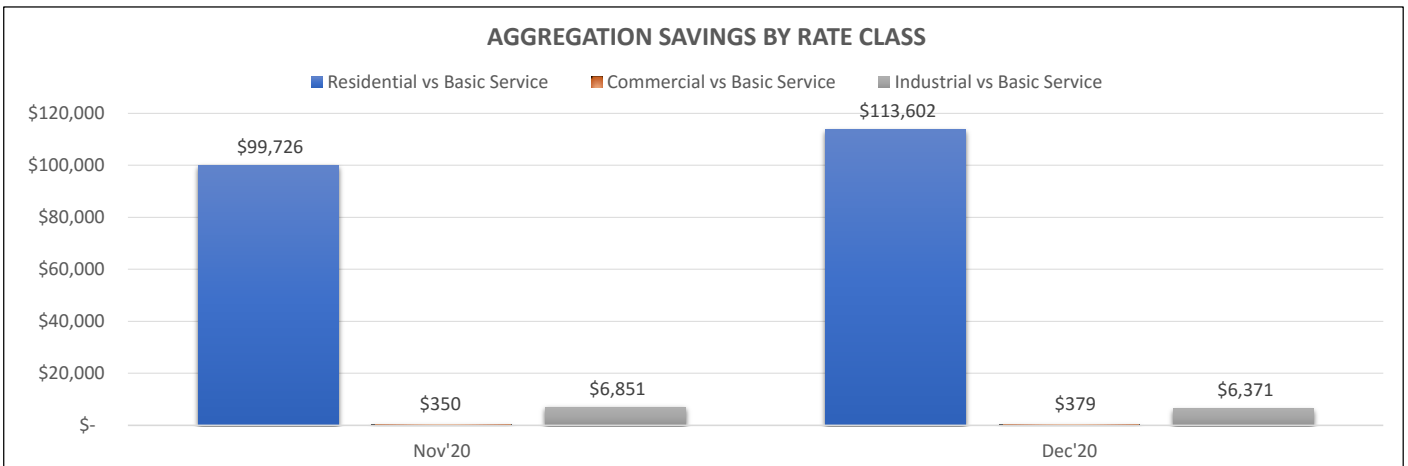
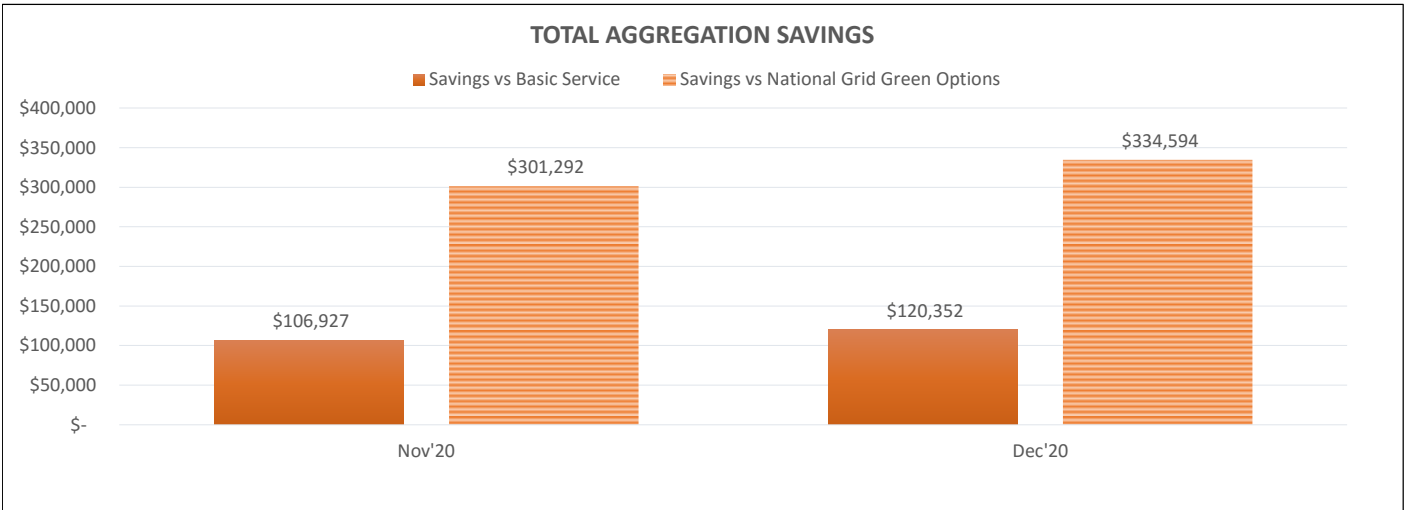
This report has been prepared by Colonial Power Group with information/data being provided by the Competitive Supplier and National Grid. The purpose of the report is to provide information about the Town of Franklin's Community Choice Power Supply Program, which currently provides competitive power supply to approximately 9,850 customers in the Town. The data provided by the Competitive Supplier is not available until three months after the month it is used. For example, power is *Used* in January, *Invoiced* in February, *Paid* in March and *Reported* in April.

PROGRAM RATES	
Term	November 2020 – November 2023
Competitive Supplier	DYNEGY
All Rate Classes	\$0.10725 / kWh
Renewable Content	100% Offset by Nat'l Wind RECs

COMPARISON TO NATIONAL GRID RATES

[Click here for NGRID GreenUp Info](#)

The Town of Franklin has chosen a 100% green product, which supports renewable energy as 100% of the power supply is offset with Renewable Energy Certificates (REC's). The Town's aggregation savings are directly tied to the margin of savings between the Program's rates and National Grid's corresponding Basic Service rates as well as the level of consumption by participating consumers. Basic Service rates change twice a year or more, depending on utility and rate class. As a result, the aggregation rate may not always be lower than the Basic Service rate. The goal of the aggregation is to deliver savings over the life of the Program against the Basic Service rate. However, such savings and future savings cannot be guaranteed.



D.P.U. Municipal Aggregation Annual Report Town of Franklin

Date	Residential Meters	Residential Usage	Small C&I Meters	Small C&I Usage	Med-Lrg C&I Meters	Med-Lrg C&I Usage	Streetlight Meters	Streetlight Usage	Total Meters	Total Usage	Competitive Supplier	Term	Renewable Supply Options
Dec-20	8,811	6,831,126	837	997,165	63	1,098,458			9,711	8,926,749	DYNEGY	11/1/20-10/31/23	100% Nat'l Wind
Nov-20	9,071	5,996,755	875	920,600	71	1,181,198			10,017	8,098,553	DYNEGY	11/1/20-10/31/23	100% Nat'l Wind
Oct-20									-	-			
Sep-20									-	-			
Aug-20									-	-			
Jul-20									-	-			
Jun-20									-	-			
May-20									-	-			
Apr-20									-	-			
Mar-20									-	-			
Feb-20									-	-			
Jan-20									-	-			

Website:

[Franklin Community Choice Power Supply Program](#)



Alternative Information Disclosure:

Colonial posts updated disclosure labels on each Municipality's page of the Colonial website as they become available. A copy of the latest disclosure label is included in the backup documentation.

NO ESA

**D.P.U. Municipal Aggregation Annual Report
Town of Franklin**

Date	RESIDENTIAL			SMALL C&I			MED-LRG C&I			STREETLIGHTS			TOTAL	AVERAGE RESIDENTIAL USAGE/METER
	Basic Svc Rate	Agg Rate	Savings	Basic Svc Rate	Agg Rate	Savings	Basic Svc Rate SEMA	Agg Rate	Savings	Basic Svc Rate	Agg Rate	Savings	Savings	
Dec-20	0.12388	0.10725	113,602	0.10763	0.10725	379	0.11305	0.10725	6,371			-	120,352	775
Nov-20	0.12388	0.10725	99,726	0.10763	0.10725	350	0.11305	0.10725	6,851			-	106,927	661
Oct-20			-			-			-			-	-	
Sep-20			-			-			-			-	-	
Aug-20			-			-			-			-	-	
Jul-20			-			-			-			-	-	
Jun-20			-			-			-			-	-	
May-20			-			-			-			-	-	
Apr-20			-			-			-			-	-	
Mar-20			-			-			-			-	-	
Feb-20			-			-			-			-	-	
Jan-20			-			-			-			-	-	

Total Aggregation Savings

<u>Month</u>	<u>Savings vs Basic Service</u>	<u>Savings vs National Grid Green Options</u>	Sort
Nov'20	\$ 106,927	\$ 301,292	1
Dec'20	\$ 120,352	\$ 334,594	2
Jan'21	\$ -		3
Feb'21	\$ -		4
Mar'21	\$ -		5

Aggregation Savings by Rate Class

<u>Month</u>	<u>Residential vs Basic Service</u>	<u>Commercial vs Basic Service</u>	<u>Industrial vs Basic Service</u>	Sort
Nov'20	\$ 99,726	\$ 350	\$ 6,851	1
Dec'20	\$ 113,602	\$ 379	\$ 6,371	2
Jan'21				3
Feb'21				4
Mar'21				5

Participating Consumers - Meters

	<i>Meters</i>	<i>Jan-19</i>	<i>Feb-19</i>	<i>Mar-19</i>
<i>Residential</i>	8,941	-	-	-
<i>Commercial</i>	856	-	0	0
<i>Industrial</i>	67	-	0	0
AVERAGE METERS/MONTH BY RATE CLASS:	9,864			

AVERAGE METERS/MONTH BY RATE CLASS: 9,864

Participating Consumers - Usage

<i>Total</i>	<i>Usage</i>	<i>Jan-19</i>	<i>Feb-19</i>	<i>Mar-19</i>
<i>Residential</i>	6,413,940	-	-	-
<i>Commercial</i>	958,883	-	-	-
<i>Industrial</i>	1,139,828	-	-	-
AVERAGE USAGE/MONTH BY RATE CLASS:	8,512,651			

AVERAGE USAGE/MONTH BY RATE CLASS: 8,512,651