



# TOWN OF FRANKLIN



## STORMWATER MANAGEMENT PLAN UPDATE JUNE 2022





## TABLE OF CONTENTS

SECTION	PAGE NO.
<b>1. INTRODUCTION .....</b>	<b>1</b>
1.1 Regulatory Background and Requirements	3
1.2 Eligibility Determination	3
1.3 Special Eligibility Determination	3
1.4 Permit Year Definitions	3
<b>2. TOWN OF FRANKLIN .....</b>	<b>4</b>
2.1 Impaired Waterbodies	4
2.2 Receiving Waterbodies	6
2.3 Interconnected Separate Storm Sewer Systems	6
2.4 Surface Public Drinking Water Supplies	7
2.5 Increased Discharges	7
<b>3. BEST MANAGEMENT PRACTICES FOR MINIMUM CONTROL MEASURES .....</b>	<b>8</b>
3.1 MCM 1: Public Education and Outreach	8
3.2 MCM 2: Public Involvement and Participation	8
3.3 MCM 3: Illicit Discharge and Detection Elimination	8
3.3.1 BMPs	8
3.3.1.2 BMP 3B Stormwater Sewer System Map.....	8
3.3.1.3 BMP 3C Written IDDE Program .....	9
3.3.1.6 BMP 3F Conduct Dry Weather Screening .....	9
3.4 MCM 4: Construction Site Runoff Control	9
3.5 MCM 5: Post-Construction Stormwater Management	10
3.5.1 BMPs	10
3.5.1.2 BMP 5B Target Properties to Reduce Impervious Areas.....	10
3.5.1.3 BMP 5C Allow Green Infrastructure .....	10
3.5.1.4 BMP 5D Street Design and Parking Lot Guidelines .....	10
3.6 MCM 6: Pollution Prevention and Good Housekeeping	11
3.6.1 BMPs	11
3.6.1.1 BMP 6A O&M Procedures.....	11
3.6.1.2 BMP 6B Inventory Town Facilities	11
3.6.1.3 BMP 6C Infrastructure O&M.....	11
3.6.1.4 BMP 6D SWPPP .....	12
3.7 Enhanced BMPs for Impaired Waterbodies	12
3.7.1 Phosphorus Control Plan	12
3.7.1.1 Milestone 1-1 Legal Analysis.....	12
3.7.1.2 Milestone 1-2 Funding Source Analysis .....	12
3.7.1.3 Milestone 1-3 Phosphorus Control Plan Area .....	13
<b>4. PROGRAM MANAGEMENT, EVALUATION, RECORD KEEPING, AND REPORTING.....</b>	<b>14</b>
4.1 Program Management	14
4.2 Program Evaluation	14
4.3 Record Keeping	14
4.4 Annual Reports	14



**5. CERTIFICATION ..... 15**

**APPENDICES**

- APPENDIX A: 2016 GENERAL PERMIT WITH APPENDICES**
- APPENDIX B: STORMWATER MANAGEMENT PLAN REVISION TRACKING FORM**
- APPENDIX C: ENDANGERED SPECIES ACT AND NATIONAL**

- HISTORIC PRESERVATION ACT REVIEW**
- APPENDIX D: MS4 PERMIT-RELATED STANDARD OPERATING PROCEDURES FOR MCM 4**
- APPENDIX E: MS4 PERMIT-RELATED STANDARD OPERATING PROCEDURES FOR MCM 6**
- APPENDIX F: SEPARATE STORM SEWER SYSTEM MAP**
- APPENDIX G: IMPAIRED WATERS AND SPECIAL RESOURCE WATERS**



---

## 1. INTRODUCTION

### **WHY IS THIS IMPORTANT?**

Stormwater runoff frequently transports pollutants through municipal separate storm sewer systems (MS4s), where it is discharged, often untreated, into local waterbodies. To the public, the MS4 is more commonly known as a stormwater drainage system or simply as the “drain.” These stormwater drains have been constructed in developed areas to reduce the risk of flooding and damage to our infrastructure. Unfortunately, stormwater drainage systems carry pollution during rain events and snow melt – this can include oil, trash, nutrients, and any other materials found on lawns, streets, and parking lots.

In the Town of Franklin, stormwater runoff discharges that are conveyed by the MS4 to the environment are regulated under the Clean Water Act and require a Permit. Franklin is one of thousands of communities and institutions across the country that must comply with these regulations. The stormwater drainage system discharge Permit is known as the “MS4 General Permit” and is issued and managed jointly by the U.S. Environmental Protection Agency (EPA) and the State of Massachusetts Department of Environmental Protection (MassDEP).

### **WHAT DOES FRANKLIN HAVE TO DO?**

The Town of Franklin has had MS4 Permit coverage since 2003 and obtained permit coverage under the MS4 Permit that was reissued on April 4, 2016 and became effective July 1, 2018 (Permit No. MAR041117). As part of the permitting requirements, Franklin is required to develop a written Stormwater Management Plan (SWMP). This SWMP (or Plan) is a reference document that guides the Town’s implementation of requirements within the Permit. The Town is required to keep records of, and report on, the activities and measures that are implemented and consistent with this Plan. MS4 General Permit requirements are summarized (and simplified) as follows:



**Implement** public education programs to help Town residents, business owners, and developers understand their role in keeping stormwater clean.



**Engage** the public in decision-making throughout the program.



**Find** and address failed septic systems or leaky or unauthorized sanitary sewer lines that might be discharging into the drainage system.



**Ensure** that construction projects do not pollute runoff with sediments and debris.



**Ensure** that new development and redevelopment control and treat runoff before it leaves the property.



**Engage** in pollution prevention actions like road and parking area best practices (cleaning drainage systems and sweeping pavements), and ensure that municipal activities like vehicle washing, lawn maintenance, and materials storage do not contribute to stormwater pollution.



The Permit Year (PY) reference within this document corresponds to each regulatory year starting on July 1, 2018. Updates to the original version of this SWMP, dated June 2019, and prepared by Wood, of Chelmsford, Massachusetts, have been incorporated into this document to reflect the Town of Franklin's stormwater management program updates and achievements through PY4 (ending June 30, 2022). Additional information related to the progress of the stormwater management program is provided in the MS4 Annual Report that is submitted to the US EPA and MassDEP in September each year. A revision log tracking these updates is located in **Appendix B**.

A copy of the original 2016 MS4 General Permit was included in **Appendix A** of the original version of this SWMP. On December 7, 2020, changes to the Permit were issued; these changes became effective on January 6, 2021. The modified 2016 MS4 General Permit and its appendices can be accessed on the EPA's website, at <https://www.epa.gov/npdes-permits/massachusetts-small-ms4-general-permit>.

**Appendix C**, Endangered Species Act and National Historic Preservation Act Review, **Appendix D**, MS4 Permit-Related Standard Operating Procedures for MCM 4, and **Appendix E**, MS4 Permit-Related Standard Operating Procedures for MCM 6 remained unchanged since the original version of this SWMP was published. Refer to the original SWMP document and/or SWMP Permit Year 2 Update to view these appendices.

## 1.1 REGULATORY BACKGROUND AND REQUIREMENTS

No updates.

## 1.2 ELIGIBILITY DETERMINATION

No updates.

## 1.3 SPECIAL ELIGIBILITY DETERMINATION

No updates.

## 1.4 PERMIT YEAR DEFINITIONS

No updates.



## 2. TOWN OF FRANKLIN

### 2.1 IMPAIRED WATERBODIES

**Table 1 – Listed Waterbodies** and **Figure 2 – Impaired Waterbodies** in the original June 2019 SWMP are both based on the “Final Massachusetts Year 2014 Integrated List of Waters”. The 2018/2020 Integrated list was released in February 2022. **Table 1** and **Figure 2** have been updated to reflect the “Final Massachusetts Integrated List of Waters for the Clean Water Act 2018/2020 Reporting Cycle” (2018/2020 List). The updated **Table 1** is provided below, and the updated **Figure 2** is located in **Appendix G**. No changes were made to this Plan based on the 2018/2020 List updates; however, future reissuance of the Massachusetts Integrated List of Waters may necessitate additional modifications to this Plan to maintain compliance with applicable requirements.

**Table 1: Listed Waterbodies**

Waterbody	MassDEP Segment ID	TMDL	Category	Impairment Cause	Impairment Source	Monitoring Requirements
Charles River	MA72-04	No	5	Flow Regime Modification	Dam or Impoundment	NMR*
				Ambient Bioassays-Chronic Aquatic Toxicity	Unknown	Contact MassDEP**
				Chlordane in Fish Tissue	Unknown	NMR*
				DDT in Fish Tissue	Unknown	NMR*
				Escherichia coli ( <i>E. coli</i> )	On-site Treatment Systems Unknown Urban Runoff/Storm Sewers	E. coli
				Fish Bioassessments	Dam or Impoundment	Contact MassDEP**
				Mercury in Fish Tissue	Unknown Atmospheric Deposition - Toxics	NMR*
				Nutrient/Eutrophication Biological Indicators	Discharges from MS4	Total Phosphorus (freshwater)
				Total Phosphorus	Discharges from MS4 Municipal Point Source Discharges	Total Phosphorus
				Temperature	Dam or Impoundment	NMR*



Waterbody	MassDEP Segment ID	TMDL	Category	Impairment Cause	Impairment Source	Monitoring Requirements
Populatic Pond	MA72096	No	5	Algae	Internal Nutrient Recycling Municipal Point Source Discharge	Total Phosphorus (freshwater)
				Chlordane in Fish Tissue	Unknown	NMR*
				DDT in Fish Tissue	Unknown	
				Dissolved Oxygen	Internal Nutrient Recycling Municipal Point Source Discharge	Dissolved Oxygen Temperature BOD <sub>5</sub> Total Phosphorus (freshwater)
				Dissolved Oxygen Supersaturation	Internal Nutrient Recycling Municipal Point Source Discharge	
				Mercury in Fish Tissue	Unknown Atmospheric Deposition - Toxics	NMR*
				Nutrient/Eutrophication Biological Indicators	Internal Nutrient Recycling Municipal Point Source Discharge	Total Phosphorus (freshwater)
Mine Brook	MA72-14	No	5	Habitat Assessment	Habitat Modification – other than Hydromodification.	Contact MassDEP**
				Escherichia coli ( <i>E. coli</i> )	Discharges from MS4 Unknown	E. coli
				Temperature	Upstream/Downstream Source Baseflow Depletion from GW Withdrawals Loss of Riparian Habitat Unknown	NMR*
Franklin Reservoir Northeast	MA72095	Yes	4A	Water Chestnut	Introduction of non-native plant	NMR*
				Aquatic Plants (Macrophytes)	Unknown	NMR*
				Turbidity	Unknown	Total Suspended Solids and Turbidity
	MA72032	Yes	4A	Aquatic Plants (Macrophytes)	Unknown	NMR*





Waterbody	MassDEP Segment ID	TMDL	Category	Impairment Cause	Impairment Source	Monitoring Requirements
Franklin Reservoir Southwest				Turbidity	Unknown	Total Suspended Solids and Turbidity
Uncas Pond	MA72122	Yes	4A	Non-Native Aquatic Plants	Introduction of Non-Native Organisms	NMR*
				Dissolved Oxygen	Unknown	Dissolved Oxygen Temperature BOD <sub>5</sub> Total Phosphorus (freshwater)
Beaver Pond	MA72006	No	4C***	Non-Native Aquatic Plants	Introduction of Non-Native Organisms	NMR*
				Fanwort	Introduction of Non-Native Organisms	NMR*

\*NMR = No monitoring required.

\*\*"Contact MassDEP" = MassDEP has indicated that no specific monitoring parameters are required for this impairment

\*\*\*Category 4C waters are defined as "Impairment not caused by a pollutant – TMDL not required"

## 2.2 RECEIVING WATERBODIES

Per the requirements of Part 1.10.2 of the MS4 General Permit, a list of all Integrated List waterbody segments that receive discharge from the Town's MS4 is provided in **Table 1**, above. The Town's MS4 General Permit Notice of Intent submission to the EPA, dated September 28, 2018, included the estimated number of outfalls that discharge directly to each Integrated List waterbody segment. A copy of the original NOI can be accessed on the EPA's website. Any updates to the numbers reported in the NOI will be included in future revisions of this document, if necessary.

## 2.3 INTERCONNECTED SEPARATE STORM SEWER SYSTEMS

Per the requirements of Part 1.10.2 of the MS4 General Permit, all known interconnected MS4s and other separate storm sewer systems receiving a discharge from the Town's MS4, as well as the waterbody segment(s) that ultimately receive the discharge, are shown on the updated Separate Storm Sewer System Map in **Appendix F**.



---

## 2.4 SURFACE PUBLIC DRINKING WATER SUPPLIES

The Town of Franklin has no surface public drinking water supply sources or surface water supply watersheds within its Town boundary. A list of all known waterbody segments that receive discharge from Franklin's MS4 is included in the Town's MS4 General Permit Notice of Intent (NOI) submission to the EPA dated September 28, 2018, which can be accessed on the EPA's website at <https://www.epa.gov/npdes-permits/regulated-ms4-massachusetts-communities>. As detailed in the NOI, there are no known direct discharges to public surface drinking water supplies. Any updates to the waterbody segments receiving discharges from Franklin's MS4 will be included in future revisions of this document, if necessary.

## 2.5 INCREASED DISCHARGES

The Town of Franklin shall comply with the provisions of 314 CMR 4.04 Massachusetts Surface Water Quality Standards, including information submittal requirements and obtaining authorization for increased discharges where appropriate. Any authorization of an increased discharge by MassDEP shall be incorporated within this SWMP.

There shall be no increased discharges, including increased pollutant loading(s) from the MS4 to impaired waters listed in categories 4A, 4C, or 5 on the most recent Massachusetts Integrated Report of waters listed pursuant to Clean Water Act Section 303(d) and 305(b) unless the discharger demonstrates that there is no net increase in loading from the MS4 to the impaired water of the pollutant(s) for which the waterbody is impaired.

Unless otherwise determined by the U.S. EPA or by MassDEP, compliance with the Part 2.2.2 and 2.3.6 requirements of the MS4 General Permit, including all reporting and documentation requirements, are considered as demonstrating no net increase or increased discharge. Part 2.2.2 and 2.3.6 requirements were included in the BMPs outlined in the June 2019 SWMP and any updates are provided in Section 3 of this SWMP Update.

If necessary, the Town of Franklin will demonstrate compliance with this provision by either:

- Documenting that the pollutant(s) for which the waterbody is impaired is not present in the MS4's discharge and retaining documentation of this finding with the SWMP documents; or
- Documenting that the total load of the pollutant(s) of concern from the MS4 to any impaired portion of the receiving water will not increase as a result of the activity and retaining documentation of this finding in the SWMP documents.



---

## 3. BEST MANAGEMENT PRACTICES FOR MINIMUM CONTROL MEASURES

### 3.1 MCM 1: PUBLIC EDUCATION AND OUTREACH

No updates.

### 3.2 MCM 2: PUBLIC INVOLVEMENT AND PARTICIPATION

No updates.

### 3.3 MCM 3: ILLICIT DISCHARGE AND DETECTION ELIMINATION

#### 3.3.1 BMPs

The following subsections have been updated to reflect the current status of the Town's MS4 General Permit program. Subsections not listed remain unchanged from the Permit Year 3 update.

#### 3.3.1.2 BMP 3B Stormwater Sewer System Map

The Town has developed a Separate Stormwater Sewer System Map consistent with the requirements of Part 2.3.4.5.a of the MS4 General Permit. The maps, provided in **Appendix F** and **Appendix G** of this SWMP Update, includes the following information:

- Outfalls and receiving waters
- Open channel conveyances
- Interconnections with other MS4s and other storm sewer systems
- Municipally-owned stormwater treatment structures
- Waterbodies identified by name and indication of all use impairments per the most recent Massachusetts Integrated List of Waters report
- Initial catchment delineations
- Drain pipes, manholes, and catch basins

The map was updated in PY4 to incorporate changes in the 2018/2020 Massachusetts Integrated List of Waters.

*This BMP has been updated to provide the most current information regarding the contents of the Town's Separate Storm Sewer System Map.*



### **3.3.1.3 BMP 3C Written IDDE Program**

The Town completed an IDDE Program Manual amendment to document updates to the outfall inventory and rankings based on an evaluation of the completed dry weather screening results. The addendum includes updates to catchment investigation prioritizations based on the outfall/interconnection screening results and an evaluation of excluded catchments based on the presence of characteristics listed in Permit Part 2.3.4.7.a.ii.

*This BMP has been updated to incorporate the most recent water quality monitoring results obtained during the implementation of dry weather screening activities and an evaluation of whether any of the Town's outfalls can be excluded from the IDDE Program. A copy of the IDDE Program Manual Addendum is available at the Department of Public Works.*

### **3.3.1.6 BMP 3F Conduct Dry Weather Screening**

As of June 30, 2022 the Town completed dry weather inspections of their outfalls. Screening and sampling results from the Town's outfall investigations will be submitted as an attachment to the Town's MS4 Annual Report (see Section 4.4 for more information). The Town will begin investigating catchments in the order of priority identified in the IDDE Program Manual addendum during PY5.

*This BMP has been updated to reflect the progress made in the Town's IDDE dry weather screening program.*

## **3.4 MCM 4: CONSTRUCTION SITE RUNOFF CONTROL**

No updates.



---

## 3.5 MCM 5: POST-CONSTRUCTION STORMWATER MANAGEMENT

### 3.5.1 BMPs

The following subsections have been updated to reflect the current status of the Town's MS4 General Permit program. Subsections not listed remain unchanged from the Permit Year 3 update.

#### 3.5.1.2 BMP 5B Target Properties to Reduce Impervious Areas

The Town proactively identifies and completes modifications and retrofits to BMPs located on Town owned properties to reduce the frequency, volume, and pollutant loads of stormwater discharges to and from its MS4 through the reduction of impervious area. Several BMPs have recently been constructed that meet MS4 General Permit requirements and summarized in a related inventory.

*This BMP has been updated to reflect the completion of a BMP modification/retrofit inventory. A copy of the BMP retrofit inventory is available at the Department of Public Works.*

#### 3.5.1.3 BMP 5C Allow Green Infrastructure

The Town completed a report assessing the Town's existing regulations related to the feasibility of making green infrastructure practices available.

*This BMP is currently in progress. The SWMP will be modified to reflect completion of the BMP and the location where the report can be reviewed upon completion.*

#### 3.5.1.4 BMP 5D Street Design and Parking Lot Guidelines

The Town completed a report assessing the Town's existing regulations related to the effect of street and parking lot guidelines on the creation of impervious cover.

*This BMP is currently in progress. The SWMP will be modified to reflect completion of the BMP and the location where the report can be reviewed upon completion.*



---

## 3.6 MCM 6: POLLUTION PREVENTION AND GOOD HOUSEKEEPING

### 3.6.1 BMPs

The following subsections remain unchanged from the Permit Year 3 update but are included to reference the location of documents prepared in association with the following BMPs.

#### 3.6.1.1 BMP 6A O&M Procedures

The Town has developed O&M procedures for parks and open spaces, buildings and facilities, vehicles and equipment, and MS4 infrastructure. These procedures can be accessed at the Department of Public Works.

#### 3.6.1.2 BMP 6B Inventory Town Facilities

The Town has developed an inventory of Town-owned facilities consistent with the requirements of Part 2.3.7.a.ii of the MS4 General Permit. The inventory includes all municipally owned facilities with the potential for stormwater polluting activities, including, but not limited to:

- Parks and open space
- Buildings where pollutants are exposed to runoff (e.g., schools, town offices, fire stations, garages, etc.)
- Vehicle and equipment storage areas

The inventory can be accessed at the Department of Public Works.

#### 3.6.1.3 BMP 6C Infrastructure O&M

The Town has developed written Operations and Maintenance (O&M) Standard Operating Procedures (SOPs) consistent with the requirements of Part 2.3.7.a of the MS4 General Permit. The objectives of the O&M SOPs are to establish procedures for MS4 infrastructure maintenance that will help reduce the discharge of pollutants from municipally owned facilities. The O&M SOPs include:

- Winter road maintenance procedures targeting minimal use and proper storage of sodium chloride and other salts
- Catch basin inspection, cleaning, and maintenance procedures, and a plan for optimization of these routine activities
- Street sweeping and cleaning procedures to ensure all Town-owned roadways are swept at least once per year
- Management and disposal of catch basin cleanings and street sweepings to avoid discharge into receiving waters
- Stormwater treatment structure inspections and maintenance procedures

The O&M SOPs can be accessed at the Department of Public Works.



### 3.6.1.4 BMP 6D SWPPP

The Town has developed written Stormwater Pollution Prevention Plans (SWPPPs) for the Department of Public Works and Recycling Center facilities consistent with the requirements of Part 2.3.7.b of the MS4 General Permit. The SWPPPs include:

- Pollution and prevention team
- Description of the facility and identification of potential pollutant sources
- Identification of stormwater controls
- Material exposure prevention, good housekeeping, preventative maintenance, spill prevention and response, erosion and sediment control, management of runoff, salt storage pile or salt-containing pile management, employee training, and maintenance of control measure practices

The SWPPPs can be accessed at the Department of Public Works.

## 3.7 ENHANCED BMPS FOR IMPAIRED WATERBODIES

### 3.7.1 Phosphorus Control Plan

The following subsections have been updated to reflect the current status of the Town's MS4 General Permit program.

#### 3.7.1.1 Milestone 1-1 Legal Analysis

The Town completed a legal analysis of existing regulations to determine whether they support effective implementation of the Phosphorus Control Plan.

A copy of the legal analysis can be accessed at the Department of Public Works.

*This BMP has been updated to reflect the location of the Phosphorus Control Plan legal analysis.*

#### 3.7.1.2 Milestone 1-2 Funding Source Analysis

The Town completed a funding source analysis to determine potential funding mechanisms to implement the Phosphorus Control Plan.

A copy of the funding source analysis can be accessed at the Department of Public Works.

*This BMP has been updated to reflect the location of the Phosphorus Control Plan funding source analysis.*



---

### 3.7.1.3 Milestone 1-3 Phosphorus Control Plan Area

Based on the most recent EPA guidance, the Town evaluated the change in impervious area within the portion of the Town located within the United States Bureau of Census defined Urbanized Area between 2005 and 2021.

A copy of the impervious area assessment can be accessed at the Department of Public Works.

*This BMP has been updated to reflect the location of the Phosphorus Control Plan Area impervious area assessment.*





---

## 4. PROGRAM MANAGEMENT, EVALUATION, RECORD KEEPING, AND REPORTING

### 4.1 PROGRAM MANAGEMENT

No updates.

### 4.2 PROGRAM EVALUATION

The Town of Franklin conducts annual evaluations of its program compliance, the appropriateness of its identified BMPs, progress toward meeting upcoming Permit requirements, and progress towards achieving its identified measurable goals, which include reducing the discharge of pollutants to the maximum extent practicable (“MEP”). The Town documents the findings of these annual evaluations in their MS4 Program annual report, submitted to the EPA and MassDEP by September 28<sup>th</sup>.

Changes to the Town’s stormwater permit compliance program do not need to be updated in their NOI, however, this information will be included in the Town’s annual reports and SWMP updates.

### 4.3 RECORD KEEPING

No updates.

### 4.4 ANNUAL REPORTS

The MS4 Annual Report is due by September 30, 2022. Annual reports are available for public access on the Town’s and the EPA’s website.



---

## 5. CERTIFICATION

"I certify under penalty of law that this document and all attachments were prepared under my direction or supervision in accordance with a system designed to assure that qualified personnel properly gathered and evaluated the information submitted. Based on my inquiry of the person or persons who manage the system, or those persons directly responsible for gathering the information, the information submitted is, to the best of my knowledge and belief, true, accurate, and complete. I am aware that there are significant penalties for submitting false information, including the possibility of fine and imprisonment for knowing violations."

**Signature**

**Date**

---

**Name**



---

# Appendices



---

## APPENDIX A: 2016 GENERAL PERMIT WITH APPENDICES



---

A copy of the original 2016 MS4 General Permit was included in Appendix A of the original version of this SWMP. On December 7, 2020, changes to the Permit were issued; these changes became effective on January 6, 2021. The modified 2016 MS4 General Permit and its appendices can be accessed on the EPA's website, at <https://www.epa.gov/npdes-permits/massachusetts-small-ms4-general-permit>.



---

## **APPENDIX B: STORMWATER MANAGEMENT PLAN REVISION TRACKING FORM**



Revision No.	Revision Date	Section of SWMP	Revision(s) Made/Reasoning
00	6/2019	--	--
01	7/3/2020	--	--
01	6/22/2021	1.	Introduction to the Town's stormwater program and adding reference to the original SWMP prepared by Wood
		2.1	Updated Table 1: Listed Waterbodies to reflect approved 2016 Massachusetts Integrated List of Waters
		2.2	NEW SECTION: Added language to reflect that receiving waterbodies are listed in the Town's MS4 General Permit NOI submission to the EPA
		2.3	NEW SECTION: Added language to reflect that interconnections are shown on the updated Separate Storm Sewer System Map in Appendix F
		2.4	NEW SECTION: Added language to reflect that the Town has no surface public drinking water supply sources
		2.5	NEW SECTION: Added language to reflect that the Town will comply with proper provisions to authorize any future increased discharges
		3.1	Added language to reflect that education and outreach materials shall note any existing Town regulations where appropriate.
		3.3.1.2	Revised language to reflect that a copy of the Separate Storm Sewer System Map will be updated annually and included in Appendix F
		3.3.1.6	Added an update on the Town's IDDE program
		3.5.1.5	Added language to reflect that the Town has completed the assessment and update of Town regulations
		3.6.1.1 – 3.6.1.3	Revised language to reflect that the Town has completed O&M procedures and their inventory of municipally-owned facilities
		3.6.1.4	Revised language to reflect that the Town has completed SWPPPs for their Department of Public Works and Recycling Center facilities
		4.2	Revised language to reflect that the Town's annual program evaluations can be found in their MS4 annual reports
		4.4	Revised language to reflect that the Town's annual reports can be accessed on the Town's and the EPA's websites
Appendix F	NEW SECTION: Added Separate Storm Sewer System Map		
Appendix G	NEW SECTION: Added Impaired Waters Map to replace Figure 2: Impaired Waterbodies in the original SWMP		



Revision No.	Revision Date	Section of SWMP	Revision(s) Made/Reasoning
02	6/30/2022	2.1	Updated Table 1: Listed Waterbodies to reflect approved 2018/2020 Massachusetts Integrated List of Waters
		3.3.1.2	Updated MS4 map to include 2018/2020 Massachusetts Integrated List of Waters impairments/TMDLs for waterbodies receiving discharges from the MS4
		3.3.1.6	Updated subsection to reflect completion of dry weather screening of outfalls
		3.5.1.2	Updated subsection to reflect status of selection of 5 BMPs located on municipally owned properties for retrofits/modifications
		3.5.1.3	Updated subsection to reflect draft Green Infrastructure Feasibility assessment report in progress.
		3.5.1.4	Updated subsection to reflect draft Street and Parking Lot Guidelines assessment report in progress.
		3.7.1.1	Updated subsection to reflect completion of Phosphorus Control Plan legal analysis
		3.7.1.2	Updated subsection to reflect completion of Phosphorus Control Plan funding source analysis
		3.7.1.3	Updated subsection to reflect completion of Phosphorus Control Plan area analysis





---

## **APPENDIX C: ENDANGERED SPECIES ACT AND NATIONAL HISTORIC PRESERVATION ACT REVIEW**



No updates.



---

## **APPENDIX D: MS4 PERMIT-RELATED STANDARD OPERATING PROCEDURES FOR MCM 4**



No updates.



---

## **APPENDIX E: MS4 PERMIT-RELATED STANDARD OPERATING PROCEDURES FOR MCM 6**

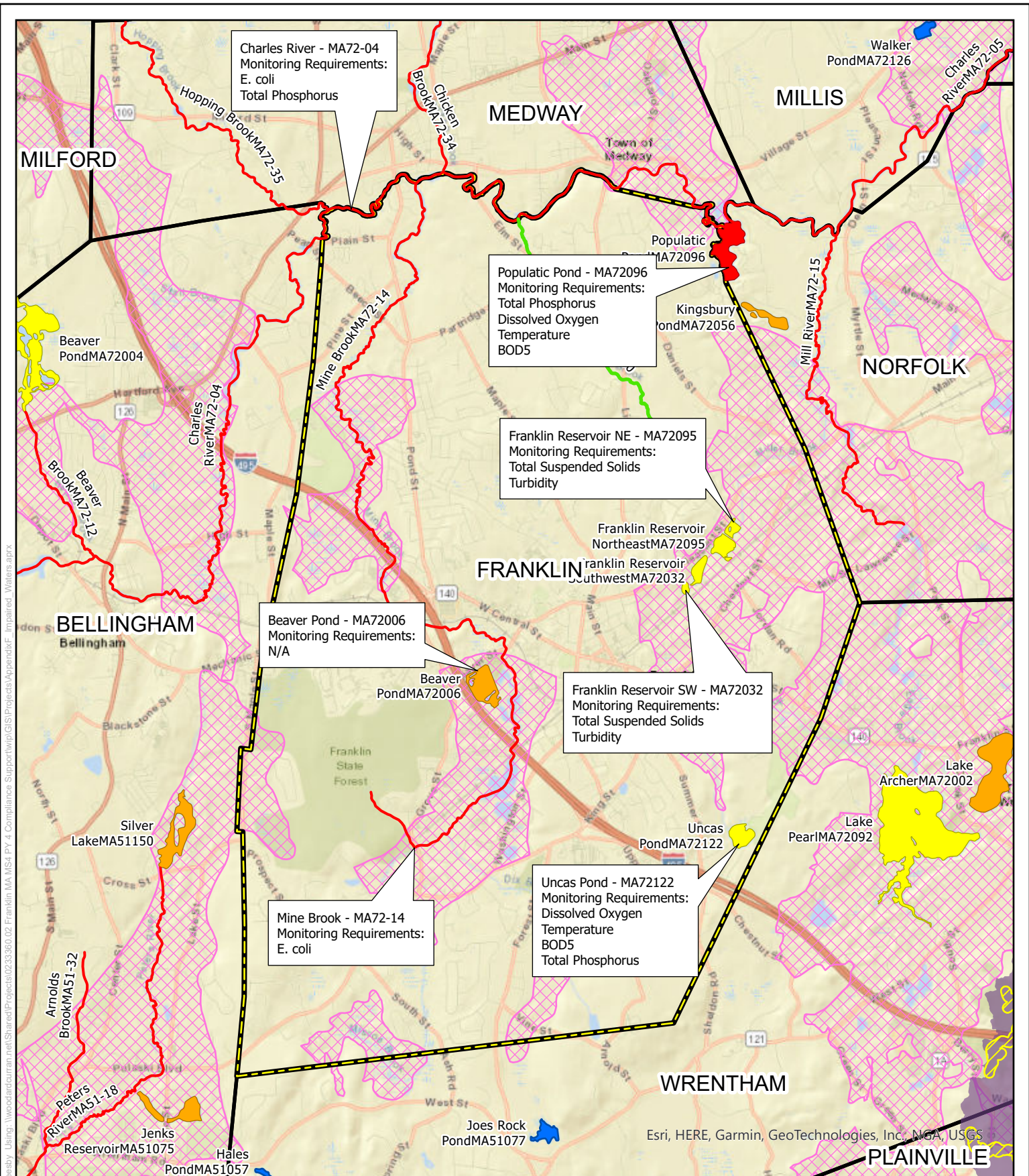


No updates.



---

## APPENDIX F: SEPARATE STORM SEWER SYSTEM MAP



Charles River - MA72-04  
Monitoring Requirements:  
E. coli  
Total Phosphorus

Populatic Pond - MA72096  
Monitoring Requirements:  
Total Phosphorus  
Dissolved Oxygen  
Temperature  
BOD5

Franklin Reservoir NE - MA72095  
Monitoring Requirements:  
Total Suspended Solids  
Turbidity

Beaver Pond - MA72006  
Monitoring Requirements:  
N/A

Franklin Reservoir SW - MA72032  
Monitoring Requirements:  
Total Suspended Solids  
Turbidity

Mine Brook - MA72-14  
Monitoring Requirements:  
E. coli

Uncas Pond - MA72122  
Monitoring Requirements:  
Dissolved Oxygen  
Temperature  
BOD5  
Total Phosphorus

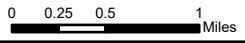
# Town of Franklin Water Resources

Town of Franklin, MA

## Legend

- Surface Water Protection Area - Zone A
- Franklin Boundary
- Outstanding Resource Waters
- MassDEP Approved Zone IIS

- 2018/2020 Integrated List Waters - 305(b)/303(d)**
- Category**
- 2 - Attaining some uses; other uses not assessed
  - 3 - No uses assessed
  - 4A - Impaired - TMDL is completed
  - 4C - Impairment not caused by a pollutant
  - 5 - Impaired - TMDL required



Project #: 0233360.00  
Map Created: June 2022

Third Party GIS Disclaimer: This map is for reference and graphical purposes only and should not be relied upon by third parties for any legal decisions. Any reliance upon the map or data contained herein shall be at the users' sole risk. **Data Sources:**





---

## APPENDIX G: IMPAIRED WATERS AND SPECIAL RESOURCE WATERS

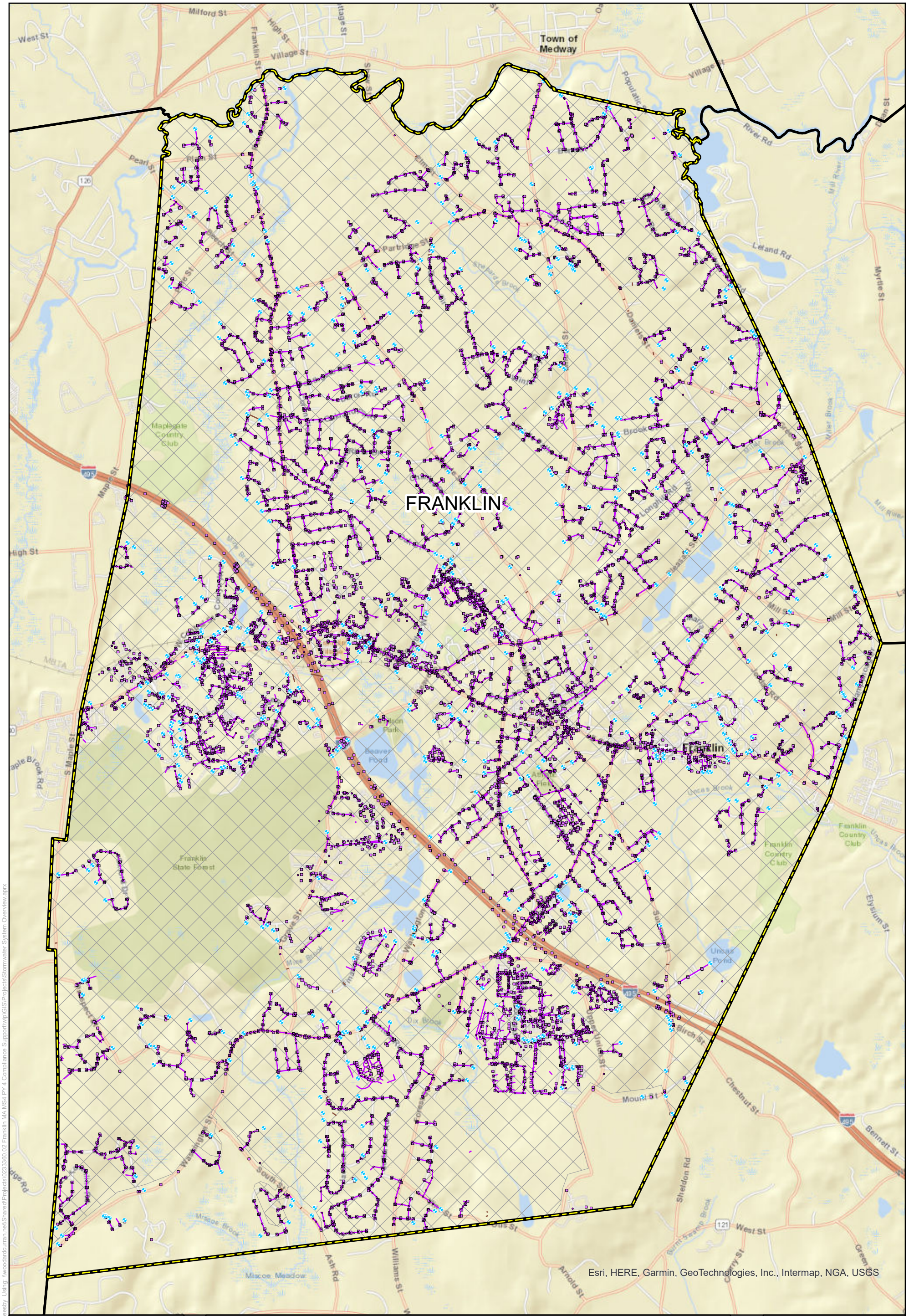


Figure Exported: 6/23/2022 8:58:58 AM Using: \\woodardcurran.net\Shared\Projects\0233360.02\Franklin MA MS4 PY 4 Compliance\_Support\GIS\Projects\Stormwater System Overview.aprx

## Stormwater Collection System Overview

Town of Franklin, MA

<b>Legend</b>	<span style="color: blue;">•</span> Drain Manhole	Town Boundaries
	<span style="color: blue;">■</span> Drain Catch Basin	Franklin Boundary
	<span style="color: blue;">●</span> Outfall	Urbanized Area
	<span style="color: purple;">—</span> Drain Pipe	
	<span style="color: brown;">—</span> Drain Culvert	

Esri, HERE, Garmin, GeoTechnologies, Inc., Intermap, NGA, USGS

0 0.25 0.5 Miles

Project #: 0233360.00  
Map Created: June 2022

Third Party GIS Disclaimer: This map is for reference and graphical purposes only and should not be relied upon by third parties for any legal decisions. Any reliance upon the map or data contained herein shall be at the users' sole risk. **Data Sources:**



---

## 5. CERTIFICATION

"I certify under penalty of law that this document and all attachments were prepared under my direction or supervision in accordance with a system designed to assure that qualified personnel properly gathered and evaluated the information submitted. Based on my inquiry of the person or persons who manage the system, or those persons directly responsible for gathering the information, the information submitted is, to the best of my knowledge and belief, true, accurate, and complete. I am aware that there are significant penalties for submitting false information, including the possibility of fine and imprisonment for knowing violations."

**Signature**

**Name**

**Date**

6/30/02